

Easting :544039

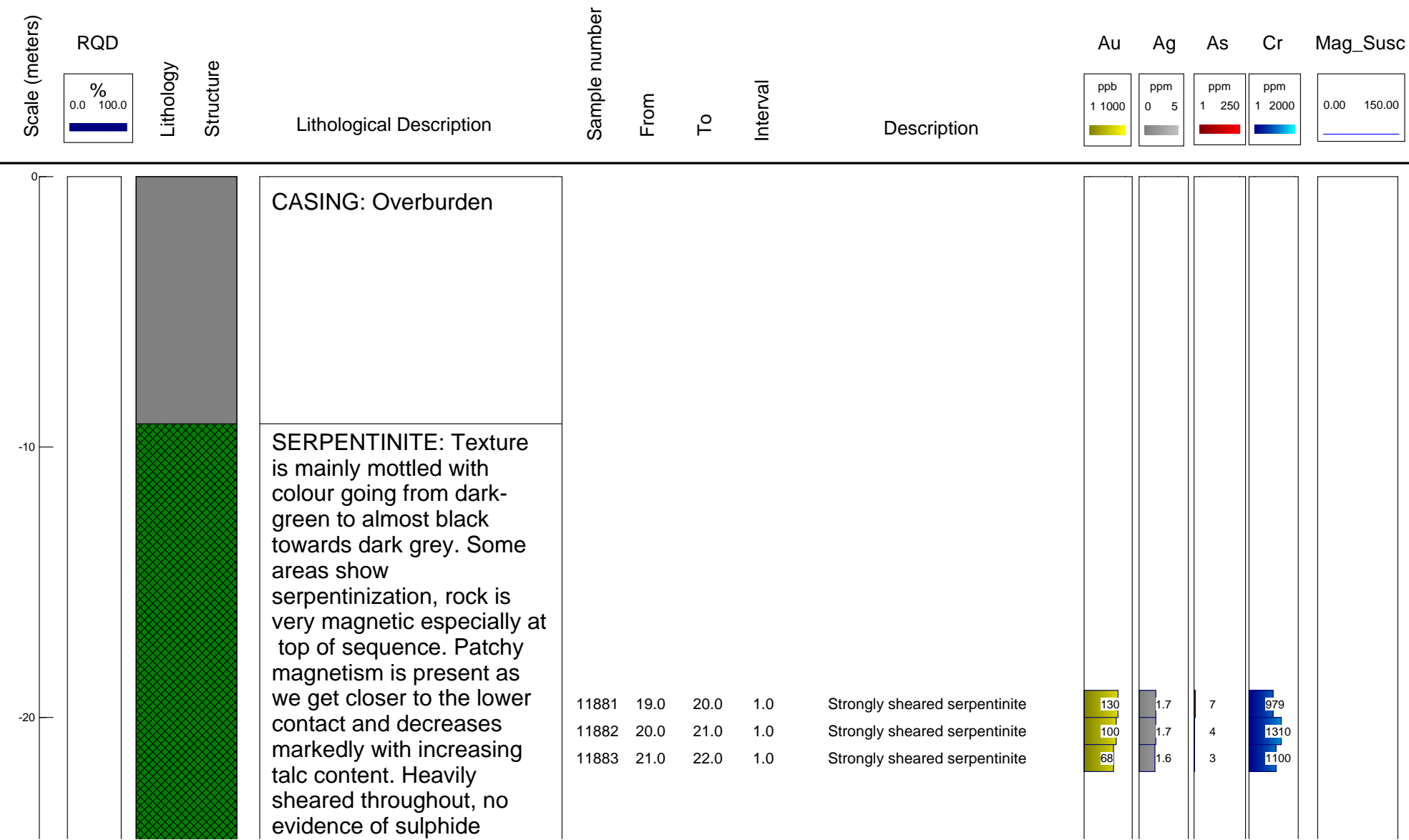
Northing :6691286

Elevation :683

Azimuth :135

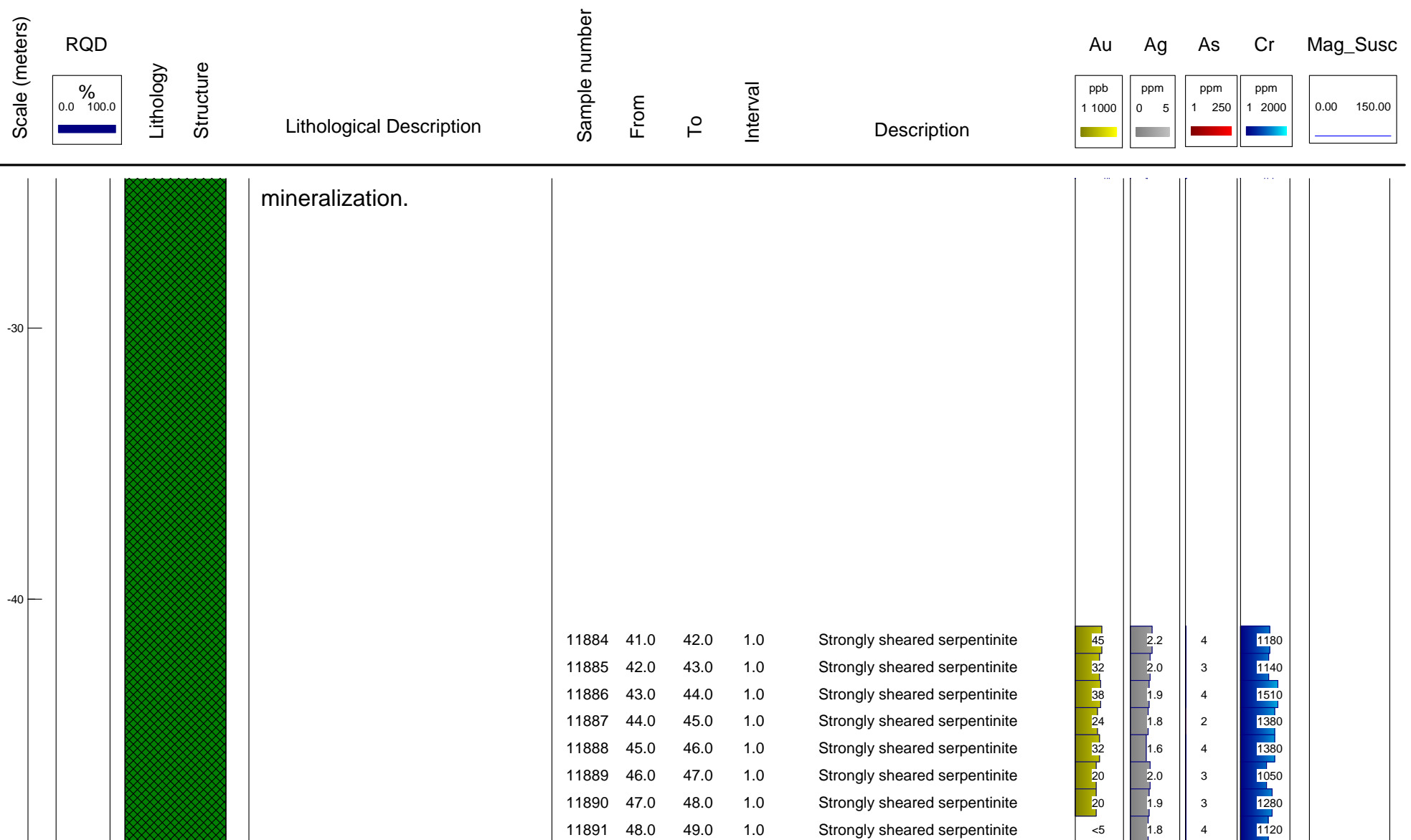
Dip :-50

Total Depth :156.36



Easting :544039
Northing :6691286
Elevation :683

Azimuth :135
Dip :-50
Total Depth 156.36



Total hole depth: 156.36

Logged by: Stephan Ruest



Easting :544039

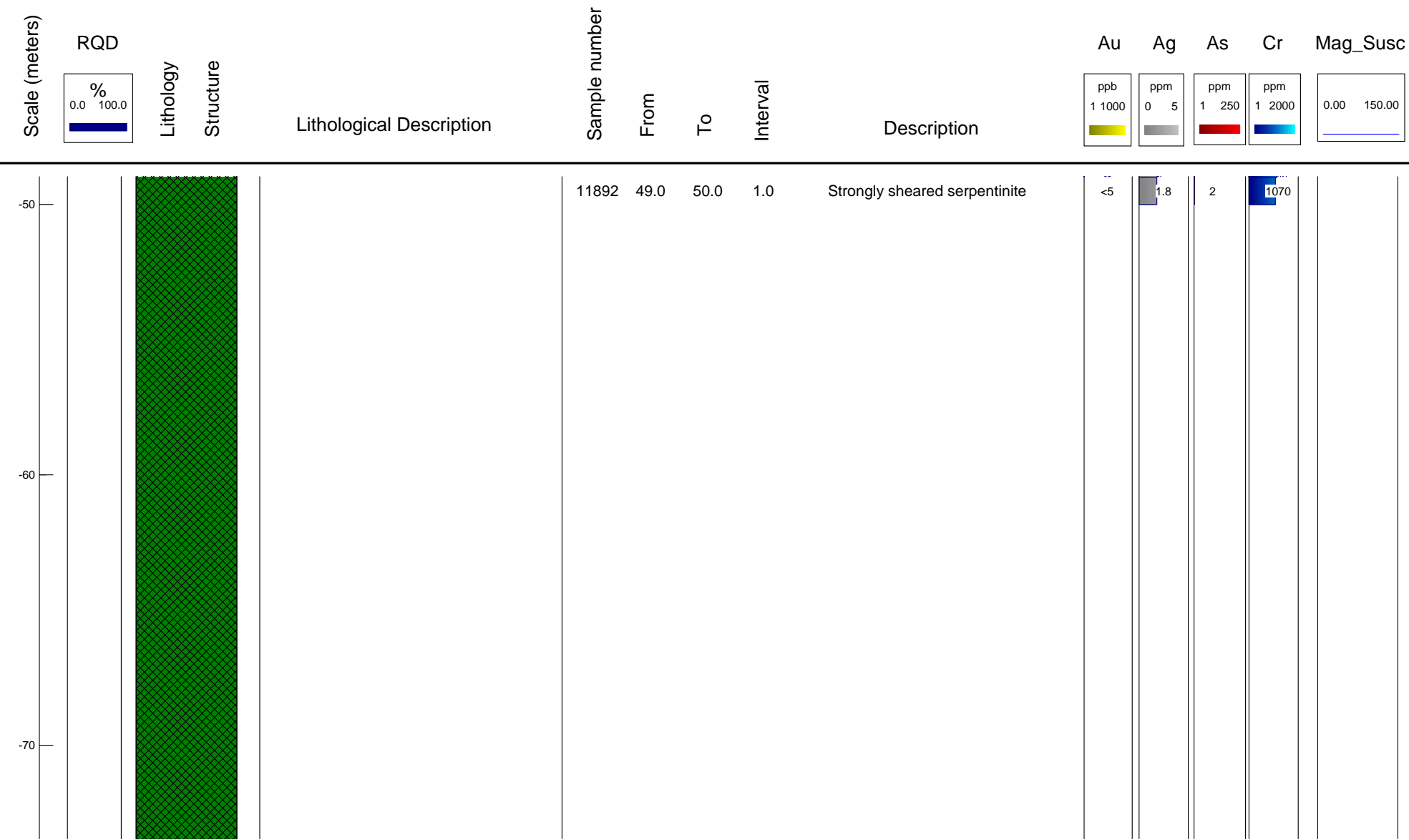
Northing :6691286

Elevation :683

Azimuth :135

Dip :-50

Total Depth :156.36



Easting :544039Azimuth :135

Northing :6691286Dip :-50

Elevation :683Total Depth :156.36



Easting :544039Azimuth :135

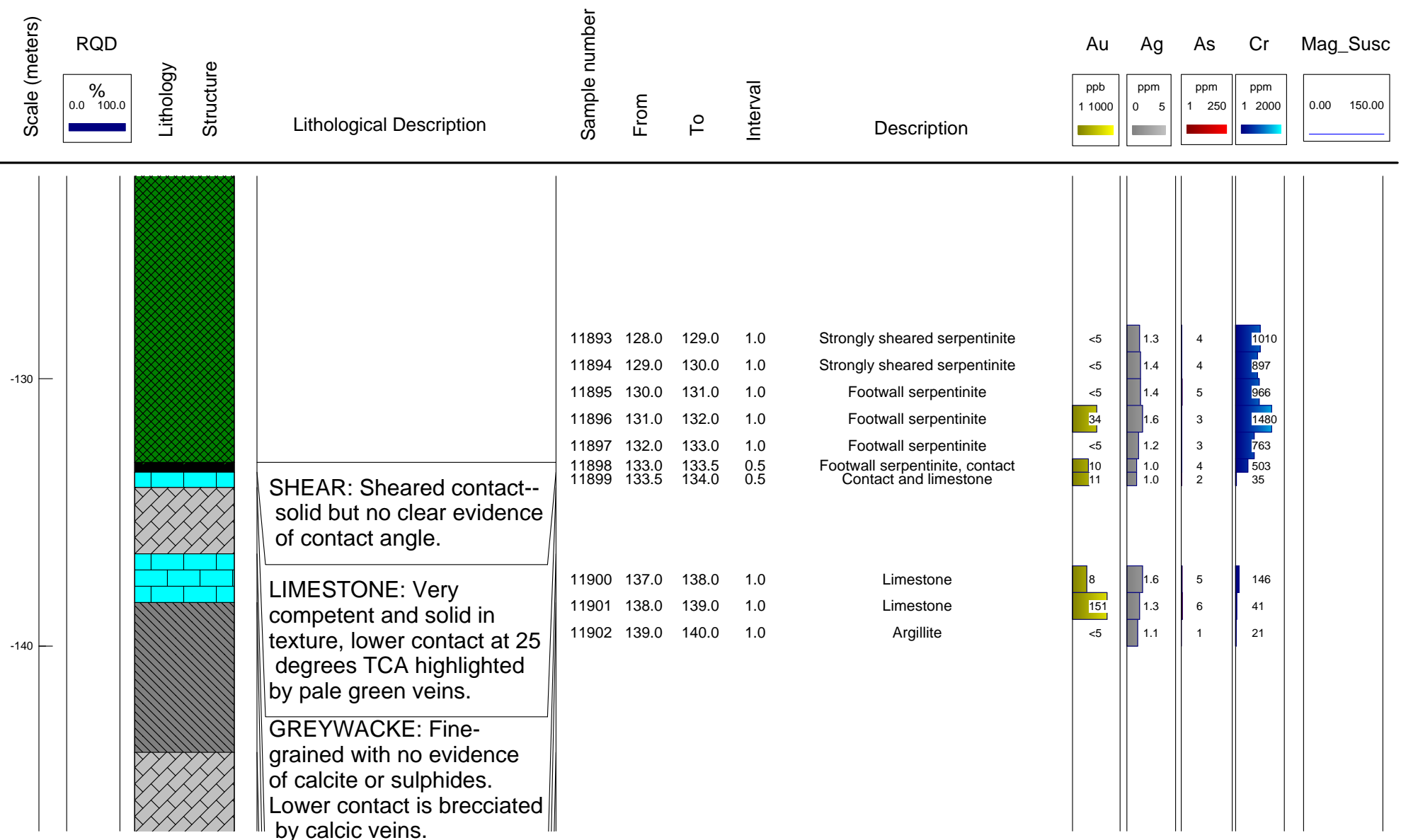
Northing :6691286Dip :-50

Elevation :683Total Depth :156.36



Easting :544039
Northing :6691286
Elevation :683

Azimuth :135
Dip :-50
Total Depth 156.36



Total hole depth: 156.36

Logged by: Stephan Ruest



Easting :544039

Northing :6691286

Elevation :683

Azimuth :135

Dip :-50

Total Depth :156.36

Scale (meters)	RQD	Lithology	Structure	Lithological Description	Sample number	From	To	Interval	Description	Au	Ag	As	Cr	Mag_Susc
	% 0.0 100.0									ppb 1 1000	ppm 0 5	ppm 1 250	ppm 1 2000	0.00 150.00
-150				LIMESTONE: Heavily veined but un-brecciated, lower contact is irregularly brecciated with a mudstone unit.	11903	149.0	150.0	1.0	Brecciated Greywacke	<5	1.4	3	12	
				11904	150.0	151.0	1.0	Brecciated Greywacke	<5	1.1	4	12		
				11905	151.0	152.0	1.0	Brecciated Greywacke	20	0.9	3	21		
				11906	152.0	153.0	1.0	Brecciated Greywacke	14	1.3	3	12		
				11907	153.0	154.0	1.0	Brecciated Greywacke	15	1.2	10	113		
				ARGILLITE: Dark in colour, some infrequent veining, veins are mostly calcic.										
				GREYWACKE: Fine-grained, solid and competent with a calcic matrix. Unit gets darker towards the end of the sequence.										
				ARGILLITE: Dark in colour, no evidence of mineralization.										